

2015 中 势

2015 1 12

- ❖ 2014
2015
7.1% GDP
- ❖
- ❖ 2015
2014
- ❖



: 021-68591607
: chenlei@changyucapital.com

: 021-68591620
: yuanbo@zongyiholding.com

: 021-68591618
: yangmeng@zongyiholding.com

主 员

: 021-68591601
: caoyang@zongyiholding.com

人 刘 华
: 021-68591612
: liulihua@zongyiholding.com

2015 中 势

2015

2015

8-10% “ ”
1 2015

6%
7.1%
7.1%



2015
2014

13.5%

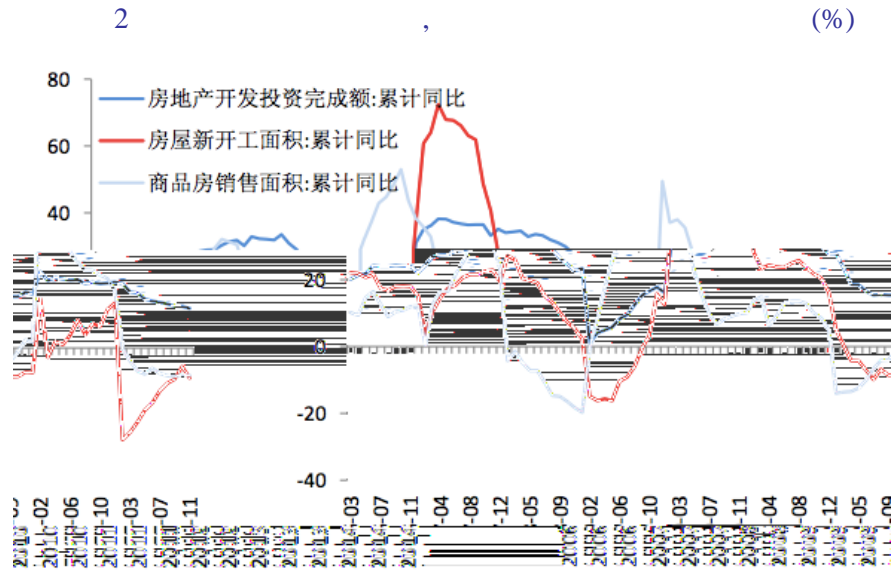
14

2015

2015

2015

2015
2.5%
35000



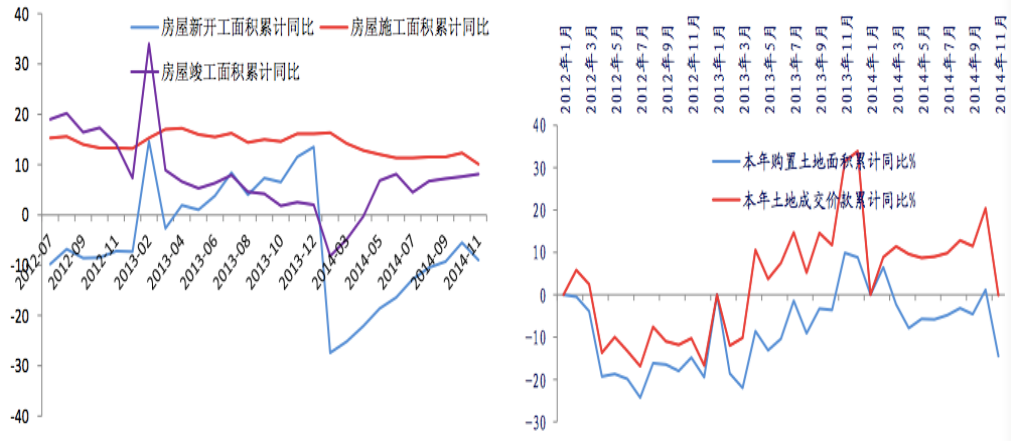
2015

2014 9 30

10

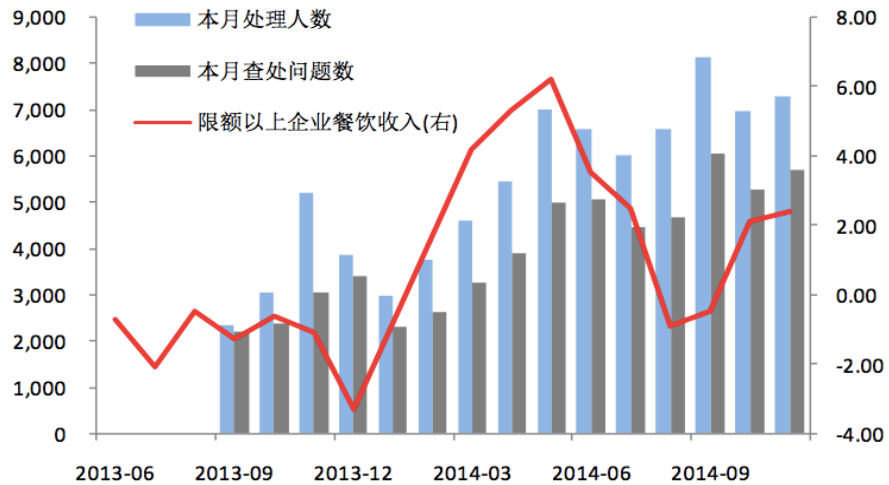
2 3

,2015



3.

2014	“	”	“	”	2014	
2013	1%				9.7%	2013
9%					12.2%	2013
13.6%	1.4			2014		



12.9% 2013 0.42%
0.26% 1.97%

1.7%

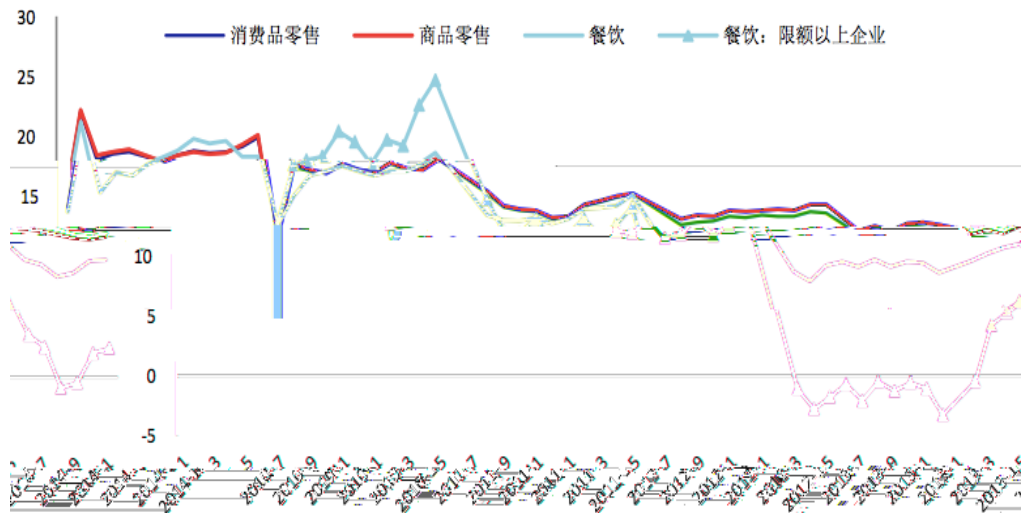
0.11%

2014 2013

2012

0.25%

15.0%~15.5%



2014

7%

8.4%

2013

3.9%

2.5% 2.7%

2015

29.4

12%

2014 7

2000

2011

GDP

6 2015



2015

1

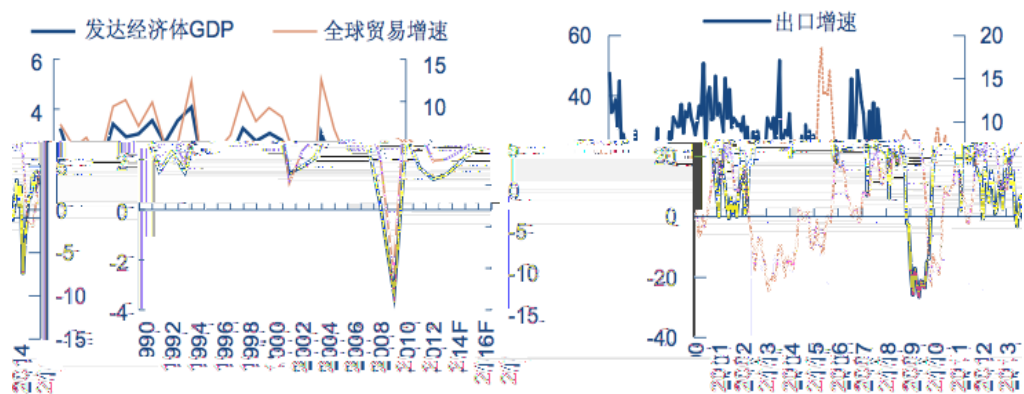
2

3

4

2015

GDP



2015 “ ”

“ ”

“ ”

”

“

21 ， 2012

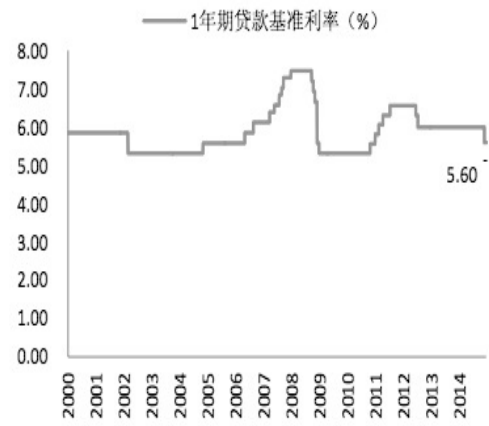
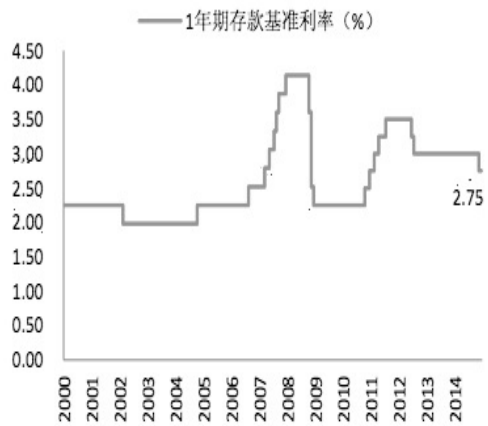
2014 11

2015

2015

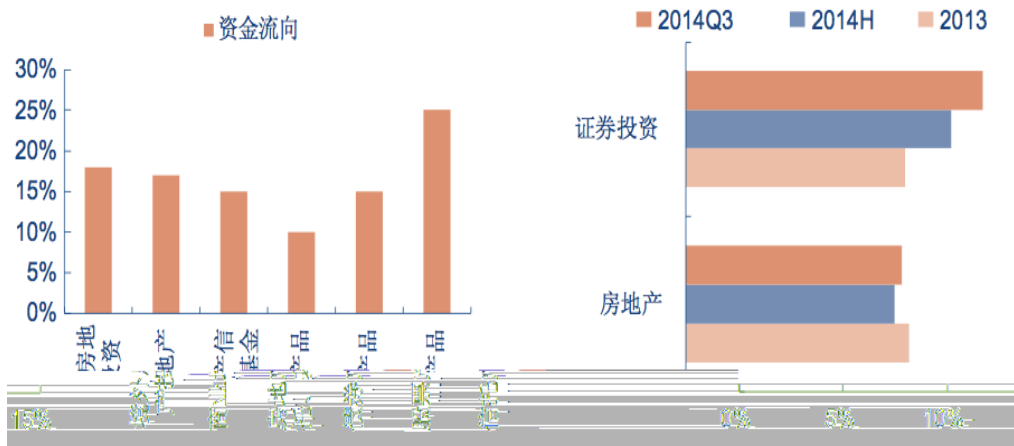
9 1

10 1



7.

2015
2014 /
GDP 22.7% 2013 12.2%
9.9%
2013 60%
2014 A
50 2.7% 5.5%



20141222-	-	2015	-154768
20141219-	-	2015	
20141229-	-	2015	
20141210-	-	2015	-599947

一般性声明